

Advanced interpretation laboratory results.

Laboratory testing is one of the most effective tools available to improve your health. Our advanced Cellmate™ reports provide detailed information, above and beyond that of the lab's results, allowing your health care practitioner to provide an extremely accurate and comprehensive health improvement plan.

Advanced testing and reports are available for Amino Acids, Organic Acids, Common Blood Chemistries, Minerals/Toxins, Fatty Acids, Cardiovascular Risk, and others.

Sample report page. The full report

Sample report page. The full report

Proven Tools for Optimal Health



Carbon Based Corporation

www.carbonbased.com

5470 Louie Lane Suite #101

Reno, NV 89511

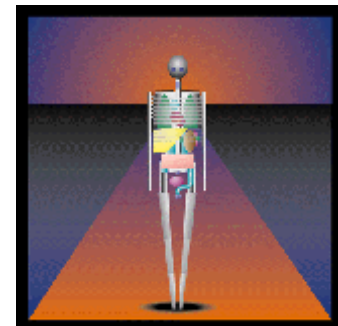
Phone: 775-851-3337

Fax: 775-851-3363

Email: info@carbonbased.com

Gold Wellness Profile

Providing a strong foundation, on which to build your optimal health program



Optimal health requires balance in all aspects of life. CellMate Reports provide a tool to help achieve that balance.

Carbon Based Corporation
CellMate™ Reports

Proven tools for Optimal health.

What is a Gold Wellness Profile?

The Foundational Wellness Profile is a set of tests and their interpretations that provide a base for determining the best nutritional and lifestyles changes necessary to achieve a state of optimal health. By combining elements of a Plasma Amino Acid, Urine Organic Acid, RBC Mineral/Toxins and Comprehensive Wellness Profile, your health care practitioner can put together a program that allows you to get the best long- and short-term results using the concept of “biochemical individuality.” You are a unique individual and these tests treat you as one.

Why use all these tests?

While alone, each of these tests can provide you with a comprehensive and detailed review of your chemistry, when combined into one integrated interpretive report the subtle nuances of your health status become crystal clear.

Cross-correlations, a process unique to the CellMate Reports, allows for more accurate and comprehensive nutritional programs to be put together by your health care practitioner. By looking at the dynamic interrelationships between the result of each of the four tests, the process of optimal health becomes easier and quicker.

What does this mean for me?

Gold Wellness Profile	
Plasma Amino Acids can give insight into:	<ul style="list-style-type: none"> • Fatigue • Chronic Pain • Weight Control • Neurological Disorders • Digestion • Inflammation • Thyroid Disorders • Cardiovascular Disease • Immune Weakness
Urine Organic Acids can give insight into:	<ul style="list-style-type: none"> • Intestinal Problems • Hypoglycemia • Low Energy • Bloating • Food Allergies • Toxicity Exposure
RBC Mineral/Toxins can give insight into:	<ul style="list-style-type: none"> • Alzheimer’s Disease • Autism • Anemia • Cardiovascular disease • Hypoglycemia • Fatigue • Learning Disabilities • Memory Loss • Poor wound healing • Sterility • Thyroid dysfunction • Weakened immune system
Comprehensive Wellness Profile	<ul style="list-style-type: none"> • General Health • Drug Interactions • Insight into potential hidden problems • Foods and nutrients to balance your chemistry • Foods and nutrients to avoid

The tests and Cellmate™ report



Your health care provider can gain valuable information about the overall status of your health through these time-tested and accurate tests. Combined with the advanced computer

technology developed by the research team at Carbon Based Corporation through its CellMate™ Wellness Reports, your practitioner can design a customized, properly sequenced, nutritional support program to optimize your chances of achieving balance and overall health.

The tests are simple, and require a blood draw, and first morning urine sample to get all the information needed. Your practitioner has chosen to utilize the advanced testing facility of MetaMetrix Clinical Laboratory in Norcross, Georgia to perform the Organic, Amino Acid and RBC Mineral/Toxin tests. The results are usually ready in 2-3 weeks and are sent to Carbon Based Corporation to put the finishing touches on the data with their extensive interpretive report.

At that point a complete, individualized program is put together taking into account your needs and requirements. From there, it's all up to you.

